

DEPARTMENT OF THE ARMY TECHNICAL MANUAL

**ORGANIZATIONAL MAINTENANCE REPAIR PARTS
AND SPECIAL TOOLS LISTS
TELEPHONE TEST SETS TS-712/TCC-11 and TS-712A/TCC-11
FSN 6625-532-4224**

Headquarters, Department of the Army, Washington, D.C.
31 July 1973

Current as of January 1973

SECTION	INTRODUCTION	Paragraph	Page
			2
		1-2	2
Explanation of columns		1-3	2
Special information		1-4	4
Location of repair parts		1-5	4
Abbreviations (Not applicable)		1-6	4
Reporting of equipment publication improvements		1-7	4
II. PRESCRIBED LOAD ALLOWANCE (Not applicable)			
III. REPAIR PARTS LIST			6
IV. SPECIAL TOOLS, TEST AND SUPPORT EQUIPMENT (Not applicable)			
V. INDEX - FEDERAL STOCK NUMBER AND REFERENCE NUMBER CROSS-REFERENCE TO FIGURE AND ITEM NUMBER			7

SECTION I

INTRODUCTION

1-1. Scope

This manual lists repair parts and special tools required for the performance of organizational maintenance of the TS-712/TCC-11 and TS-712A/TCC-11. The PCCN for the equipment is GCWAEL for all models.

1-2. General

This repair parts and special tools list is divided into the following sections:

a. *Prescribed had Allowance (PLA) -Section II.* Not applicable.

b. *Repair Parts List-Section III.* A list of repair parts authorized for the performance of maintenance at the organizational level. This repair parts list is arranged in alphabetical order.

c. *Special Tools, Test and Support Equipment - Section IV.* Not applicable.

d. *Index-Federal Stock Number and Reference Number Cross-Reference to figure and Item Number - Section V.* A list, in ascending numerical sequence, of all Federal stock numbers appearing in the listings, followed by a list, in alphameric sequence, of all reference numbers appearing in the listings. Federal stock number and reference numbers are cross-referenced to each illustration figure and item number or reference designation appearance.

1-3. Explanation of Columns

The following provides an explanation of columns in the tabular lists-

a. *Source, Maintenance, and Recoverability Codes (SMR).*

(1) Source code. Indicates the manner of acquiring support items for maintenance repair, or overhaul of end items. Source codes are-

<i>Code</i>	<i>Explanation</i>
PA	Item procured and stocked for anticipated or known usage.
PB	Item procured and stocked for insurance purposes because essentiality dictates that a minimum quantity be available in the supply systems.
PC	Item procured and stocked and which otherwise would be coded PA except that it is deteriorative in nature,
PD	Support item, excluding support equipment, procured for initial issue or outfitting and stocked only for subsequent or additional

Code

Explanation

- initial issues or outfittings. Not subject to automatic replenishment.
- PE** -- Support equipment procured and stocked for initial issue or outfitting to specified maintenance repair activities.
- PF** - Support equipment which will not be stocked but which will be centrally procured on demand.
- PG - Item procured and stocked to provide for sustained support for the life of the equipment. It is applied to an item peculiar to the equipment which because of probable discontinuance or shutdown or production facilities would prove uneconomical to reproduce at a later time.
- KD -An item of depot overhaul/repair kit and not purchased separately. Depot kit defined as a kit that provides items required at the time of overhaul or repair.
- KF - An item of a maintenance kit and not purchased separately. Maintenance kit defined as a kit that provides an item that can be replaced at organizational or direct support or general support levels of maintenance.
- KB - Item included in both a depot overhaul/repair kit and a maintenance kit.
- MO** -Item to be manufactured or fabricated at organizational level.
- MF - Item to be manufactured or fabricated at direct support maintenance level.
- MH -Item to be manufactured, or fabricated at general support maintenance level.
- MD -Item to be manufactured or fabricated at depot maintenance level.
- AO - Item to be assembled at organizational level.
- AF - Item to be assembled at direct support maintenance level.
- AH - Item to be assembled at general support maintenance level.
- AD -Item to be assembled at depot maintenance level.
- XA** -- Item is not procured or stocked because the requirements for the item will result in the replacement of the next higher assembly.
- XB** -- Item is not procured or stocked. If not available through salvage, requisition.
- XC** -- Installation drawing, diagram instruction sheet, field service drawing, that is identified by manufacturers' part number.

Explanation
D — Support items can be requisitioned with justification.

NOTE

Cannibalization or salvage may be used as a source of supply for any items source coded above except those coded XA and aircraft support items as restricted by AR 700-42.

(2) **Maintenance code.** Maintenance codes are assigned to indicate the levels of maintenance authorized to USE and REPAIR support items. The maintenance codes are entered in the third and fourth positions of the Uniform SMR Code Format as follows—

(a) **Use (third position).** The maintenance code entered in the third position indicates the lowest maintenance level authorized to remove, replace, and use the support item. The maintenance code entered in the third position indicates one of the following levels of maintenance.

<i>Code</i>	<i>Application/Explanation</i>
O —	Support item is removed, replaced, used at the organizational level of maintenance.

NOTE

A code "C" may be used in this position to denote crew or operator maintenance performed within organizational maintenance.

F -	Support item is removed, replaced, used at the direct support maintenance level.
H —	Support item is removed, replaced, used at the general support maintenance.
D —	Support items that are removed, replaced, used at depot only.

(b) **Repair (fourth position).** The maintenance code entered in the fourth position indicates whether the item is to be repaired and identifies the lowest maintenance level with the capability to perform complete repair (i.e., all authorized maintenance functions). When a maintenance code is not used a dash (-) sign is entered. For multi-service equipment/systems or when a code is entered, this position will contain one of the following maintenance codes as assigned by the service(s) that require the code—

<i>Code</i>	<i>Application/Explanation</i>
O —	The lowest maintenance level capable of complete repair of the support item is the organizational level.
F —	The lowest maintenance level capable of complete repair of the support item is direct support.

<i>Code</i>	<i>Explanation</i>
H —	The lowest maintenance level capable of complete repair of the support item is general support.
D —	The lowest maintenance level capable of complete repair of the support item is the depot level.
L —	Repair restricted to designated Specialized Repair Activity.
Z —	Non-repairable. No repair is authorized.
B —	No repair is authorized. The item may be reconditioned by adjusting, lubricating, etc., at the user level. No parts or special tools are procured for the maintenance of this item.

(3) **Recoverability code.** Recoverability codes are assigned to support items to indicate the disposition action on unserviceable items. The recoverability code is entered in the fifth position of the uniform SMR Code Format as follows—

<i>Code</i>	<i>Explanation</i>
Z —	Nonrepairable item. When unserviceable, condemn and dispose at the level indicated in the first digit of the maintenance code.
O —	Repairable item. When uneconomically repairable, condemn and dispose at organizational level.
F -	Repairable item. When uneconomically repairable, condemn and dispose at the direct support level.
H -	Repairable item. When uneconomically repairable, condemn and dispose at the general support level.
D -	Repairable item. When beyond lower level repair capability, return to depot. Condemnation and disposal not authorized below depot level.
L -	Repairable item. Repair, condemnation, and disposal not authorized below depot/Specialized/Repair Activity level.
A -	Item requires special handling of condemnation procedures because of specific reasons (i.e., precious metal content, high dollar value, critical material or hazardous material).

b. **Federal Stock Number.** Indicates the Federal stock number assigned to the item and will be used for requisitioning purposes.

c. **Description.** Indicates the Federal item name and a **minimum** description required to identify the item. The last line indicates the reference **number** followed by the applicable Federal Supply Code for Manufacturer (FSCM) in parentheses. The FSCM is used as an element in item identification to desig-

nate manufacturer or distributor or Government agency, etc., and is identified in SB 708-42.

d. **Unit of Measure (U/M).** Indicates the standard or basic quantity by which the listed item is used in performing the actual maintenance function. This measure is expressed by a two-character alphabetical abbreviation: e.g., ea, in, pr, etc., and is the basis used to indicate quantities and allowances in subsequent columns. When the unit of measure differs from the unit of issue, the lowest unit of issue that will satisfy the required units of measure will be requisitioned.

e. Quantity *Incorporated* in *Unit*. This column indicates the quantity of the item used in the equipment.

f. **15-Day Organizational Maintenance Allowance.**

(1) The repair parts indicated by an asterisk in the allowance column represent those authorized for use at the organizational category, and will be requisitioned on an "as required" basis, until stockage is based on demand in accordance with AR710-2.

(2) Major Army commanders are authorized to approve reduction in the range of support items authorized for use in units within their commands. Recommendations for increase in range of items authorized for use will be forwarded to Commander, US Army Electronics Command, ATTN: AMSEL-MA-CW, Fort Monmouth, NJ., 07703. Any changes approved will be reflected in a revision to the RPSTL.

(3) Allowance quantities are indicated in the special tools list section for special tools, TMDE, and other equipment.

g. **Illustration.** This column is divided as follows:

(1) Figure *number*. Indicates the figure number of the illustration on which the item is shown in TM 11-2143.

1-4. Special Information

a. Usable on codes are included in column 3. Uncoded items are applicable to all models. Identification of the usable on codes used in this publication are-

Code	Used on
A00	TS-712/TCC-11
AUA	TS-712/TCC-11

b. The following publication pertains to the equipment and its components:

TM 11-2143 Telephone Test Sets TS-712/TCC-11 and TS-712 A/TCC-11.

1-5. Location of Repair Parts

a. This manual contains one cross-reference index (sec V) to be used to locate a repair part when either the Federal stock number or reference number (manufacturer's part number) is known. The first column in the index is prepared in numerical or alphanumeric sequence in ascending order. The reference numbers (manufacturer's part numbers) are listed immediately following the last listed Federal stock number in the index of Federal stock numbers.

b. When the Federal stock number or reference number is known, follow the procedures given in (1) and (2) below.

(1) Refer to the index of Federal stock numbers (sec V) and locate the Federal stock number or reference number. The FSN and reference number are cross-referenced to the applicable figure and item number or reference designation.

(2) Refer to the repair parts list (sec III) and locate the figure number (col 7a) and item number or reference designation (col 7b) as noted in the FSN index.

c. When the figure and item number or reference designation are known, scrutinize columns 7a and 7b of the repair parts list (sec III) until the item is located.

d. When the FSN, reference number, figure number, item number and reference designation are not known, scrutinize column 3 of the repair parts list (sec III), which is arranged in alphabetical order.

1-6. Abbreviations

Not applicable

1-7. Reporting of Equipment Publication Improvements

The reporting of errors, omissions, and recommendations for improving this publication by the individual user is encouraged. Reports should be submitted on DA Form 2028 (Recommended Changes to Publications) and forwarded direct to Commander, US Army Electronics Command, ATTN: AMSEL-MA-CW, Fort Monmouth, N.J., 07703.

(Next printed page is 6)

(1) SIR CODE	(2) FEDERAL STOCK NUMBER	(3) DESCRIPTION REFERENCE NUMBER & MFR CODE USABLE ON CODE		(4) UNIT OF MEAS	(5) QTY. INC IN UNIT	(6) 15-DAY ORGANIZATIONAL MAINTENANCE ALW				(7) ILLUSTRATION	
						(a)	(b)	(c)	(d)	(a)	(b)
						1-5	6-20	21-50	51-100	FIGURE NO.	ITEM NO.
P40ZZ	5975-513-2712	NO. 1, DUST AND MOISTURE SEAL	NO-REF-DESIG.....	EA	5	*	*	*	*		
		SEAL FOR 1.04 IN DIA ROTARY SHAFT	1-1263 (49956)								
P40ZZ	5355-160-5920	NO. 18 NO-REF-DESIG RD BLACK PLASTIC	5/8 IN..	EA	2	*	*	*	*		
		PIA X 7/16 IN THK DIA	1126 (80375)								
P40ZZ	5355-284-5176	NO. 18 NO-REF-DESIG BAR BLACK BAKFLITE	1-....	EA	3	*	*	*	*		
		15/32 IN LG X 3/4 IN WD X 21/32 IN H	1L707334-2 (70408)								
P40ZZ	5960-272-9094	SHIELD, ELECTRON TUBE NO-REF-DESIG.....		EA	3	*	*	*	*		
		(AUTHORIZED ALLOWANCES BASED ON 2 IN USE, 1									
		REQUIRED TO HOLD SPARE TUBE)									
P40ZZ	6625-392-8619	STRAP, CARRYING NO-REF-DESIG.....		EA	1	*	*	*	*	2	
		SC63966 (89763)									

INDEX - FEDERAL STOCK NUMBER AND REFERENCE NUMBER
 CROSS-REFERENCE TO FIGURE AND ITEM NUMBER

STOCK NUMBER	FIGURE NO.	ITEM NO.	STOCK NUMBER	FIGURE NO.	ITEM NO.
5355-160-5920			5975-513-2712		
5355-284-5176			6625-392-8619	2	
5960-272-9094					

REFERENCE NO.	MFR CODE	FIG. NO.	ITEM NO.	REFERENCE NO.	MFR CODE	FIG. NO.	ITEM NO.
9L707334-2	70409			11-1263	49956		
SCC63966	80363	2		6126	80375		
TS102002	81349						

By Order of the Secretary of the Army:

CREIGHTON W. ABRAMS
General, United States Army
Chief of Staff

Official:

VERNE L. BOWERS
Major General, United States Army
The Adjutant General

Distribution:

Active Army:

USASA (2)
CNGB (1)
ACSC-E (2)
USAAREND (2)
USAMB (10)
AMC (1)
CONARC (5)
ARADCOM (2)
ARADCOM Rgn (2)
OS Maj Comd (4)
LOGCOMDS (5)
MICOM (2)
TECOM (2)
USASTRATCOM (4)
HISA (ECOM) (18)
MDW (1)
Armies (2)
Corps (2)
Sve Colleges (2)
USASESS (5)
USAADS (2)
USAFAS (2)
USARMS (2)
USAIS (2)
USAES (2)
USAINTS (3)
USACDCEC (5)

Inatl (2) except
Fort Gordon (10)
Fort Huachuca (10)
Fort Carson (10)
WSMR (2)
Army Dep (2) except
LEAD (14)
SAAD (30)
TOAD (14)
LEAD (7)
ATAD (10)
USA Dep (2)
Sig Sec USA Dep (2)
Sig Dep (5)
Sig FLDMS (1)
USAERDAA (1)
USAERDAW (1)
MAAG (1)
USARMIS (1)
Ft Richardson (ECOM Ofc) (2)
WRAMC (1)
Units org under fol TOE:
(1 copy each)
11-156
29-134
29-136

NG: State AG (3); Units same as Active Army except allowance is one (1) Copy to each unit.

USA R: None

For explanation of abbreviations used, see AR 310-50.

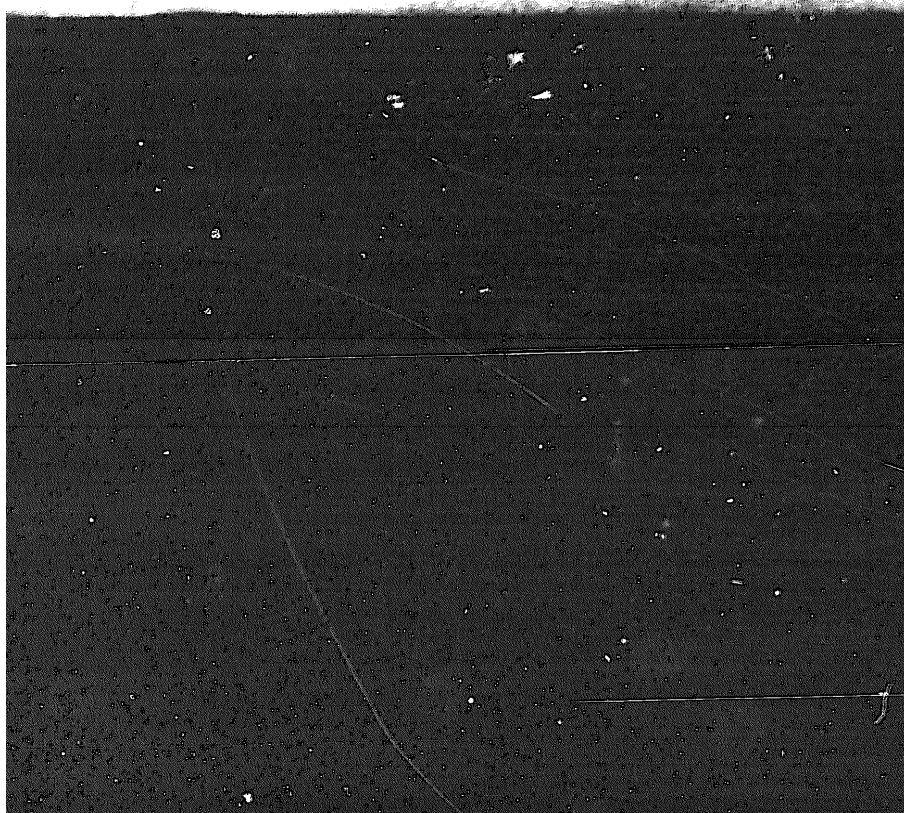
★ U.S. GOVERNMENT PRINTING OFFICE: 1973-760620/1125

END

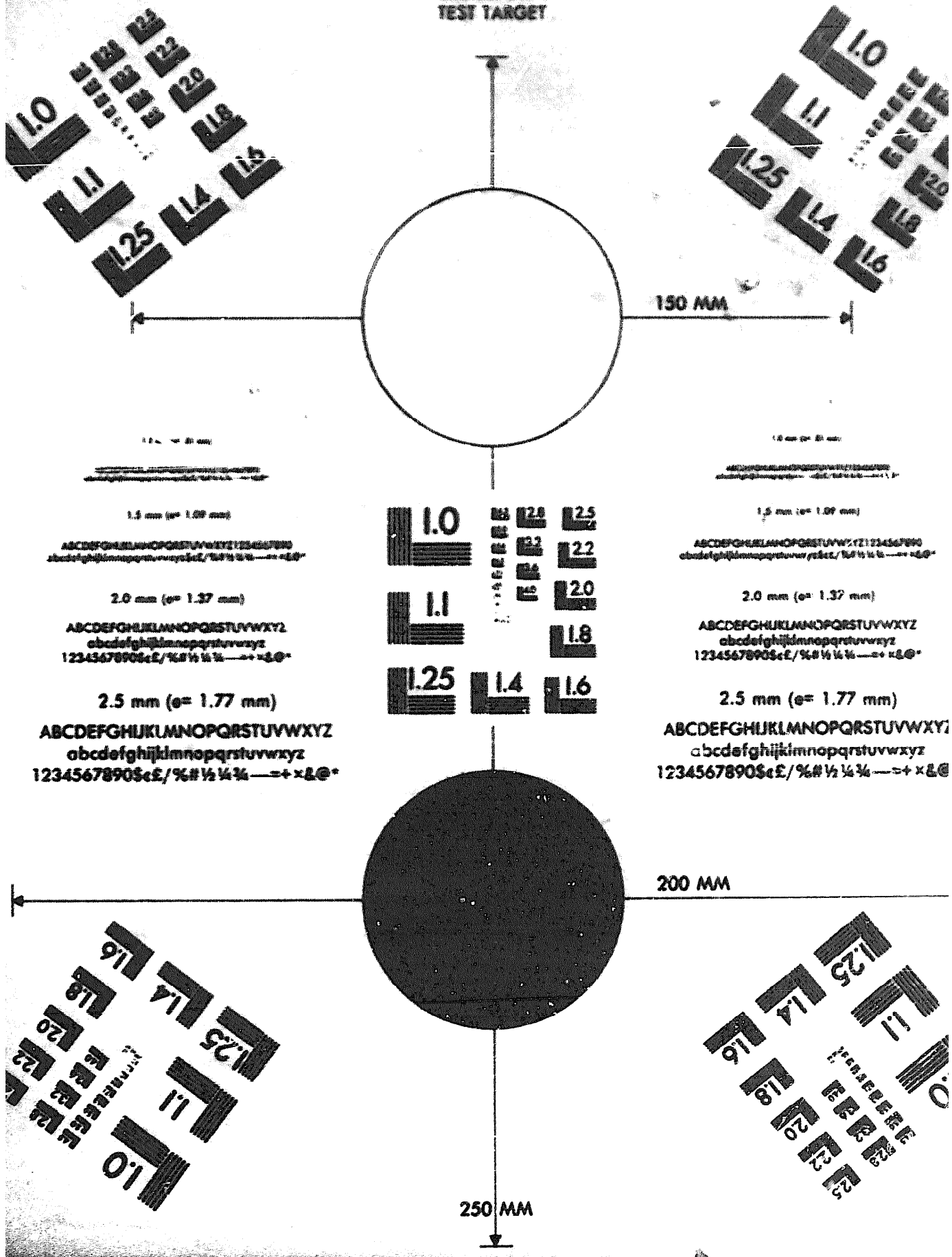
7-25-83

DATE





DEPARTMENT OF THE ARMY
MICROFORM
TEST TARGET



150 MM

200 MM

250 MM

1.5 mm (e= 1.09 mm)
ABCDEFGHIJKLMN OPQRSTUVWXYZ 1234567890
abcdefghijklmnopqrstuvwxyz \$%& / ' * ~ ^ _ { | } ~ - + x & @ *

2.0 mm (e= 1.37 mm)
ABCDEFGHIJKLMN OPQRSTUVWXYZ
abcdefghijklmnopqrstuvwxyz
1234567890 \$%& / ' * ~ ^ _ { | } ~ - + x & @ *

2.5 mm (e= 1.77 mm)
ABCDEFGHIJKLMN OPQRSTUVWXYZ
abcdefghijklmnopqrstuvwxyz
1234567890 \$%& / ' * ~ ^ _ { | } ~ - + x & @ *

1.5 mm (e= 1.09 mm)
ABCDEFGHIJKLMN OPQRSTUVWXYZ 1234567890
abcdefghijklmnopqrstuvwxyz \$%& / ' * ~ ^ _ { | } ~ - + x & @ *

2.0 mm (e= 1.37 mm)
ABCDEFGHIJKLMN OPQRSTUVWXYZ
abcdefghijklmnopqrstuvwxyz
1234567890 \$%& / ' * ~ ^ _ { | } ~ - + x & @ *

2.5 mm (e= 1.77 mm)
ABCDEFGHIJKLMN OPQRSTUVWXYZ
abcdefghijklmnopqrstuvwxyz
1234567890 \$%& / ' * ~ ^ _ { | } ~ - + x & @ *

1.0 1.25 1.25
1.1 2.2 2.2
1.25 1.4 2.0
1.4 1.6 1.8